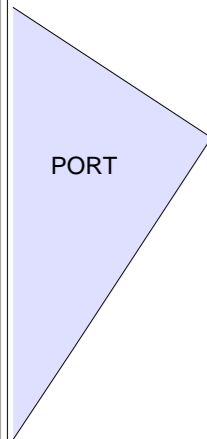
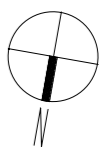
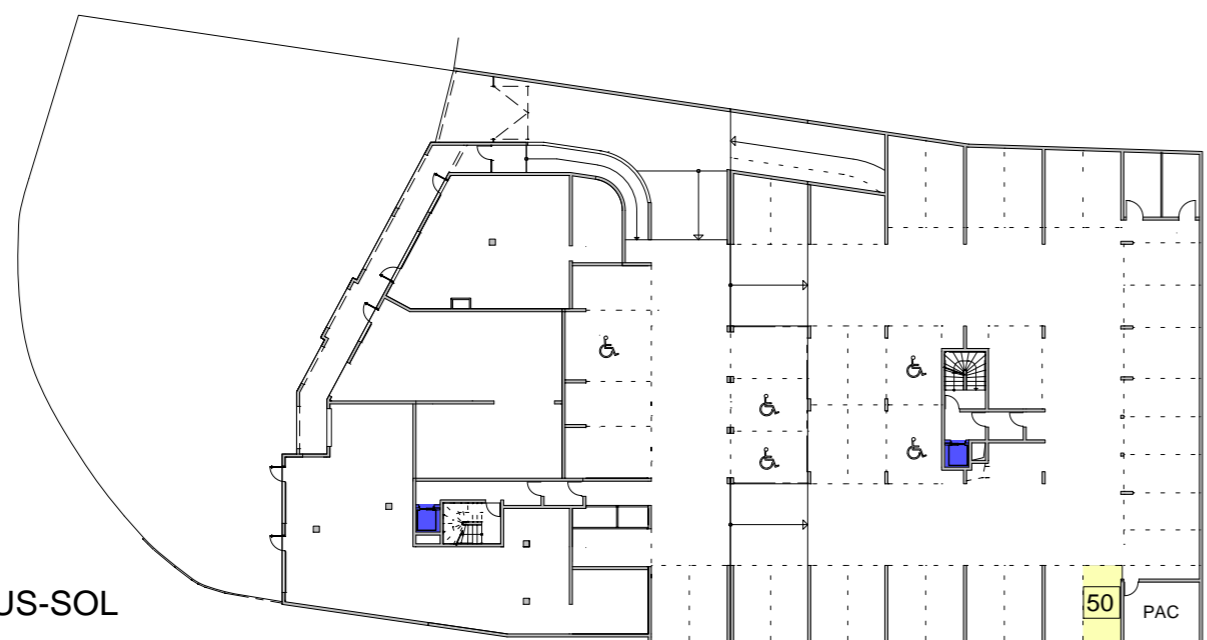
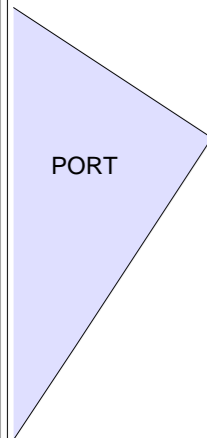




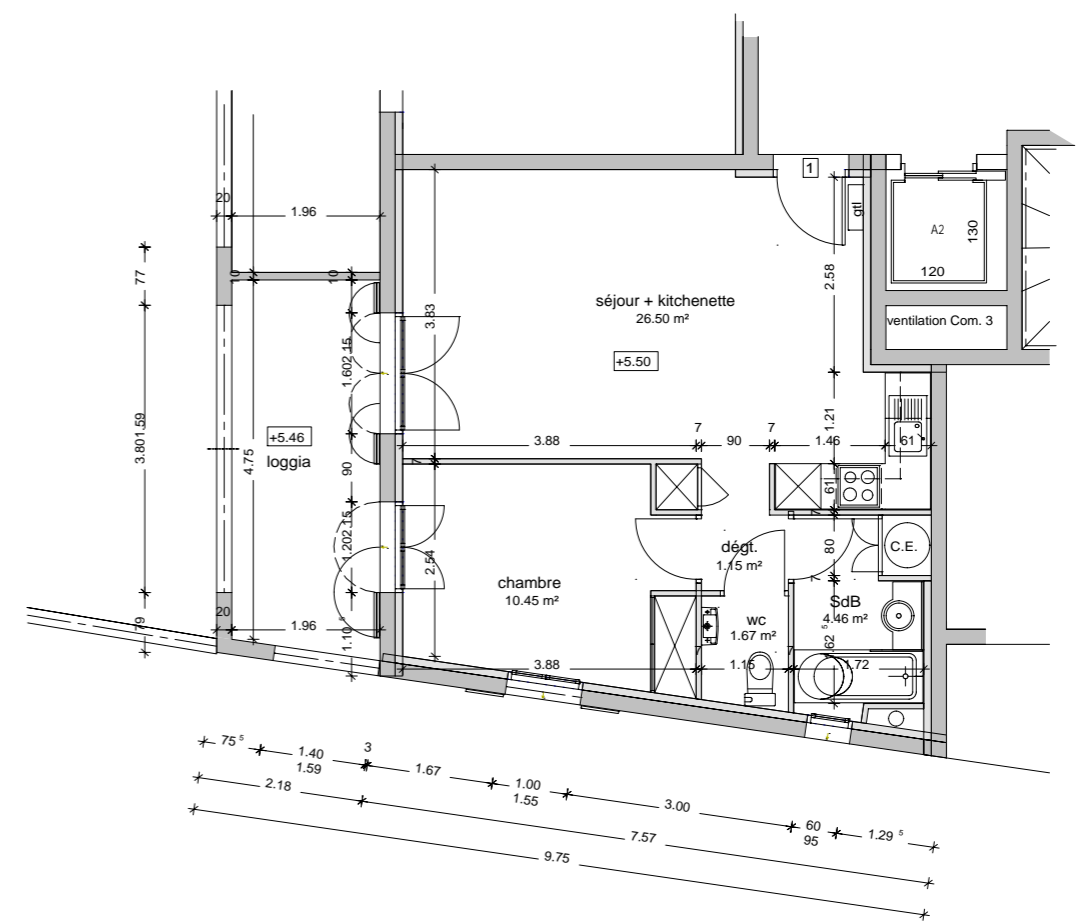
Les Voiles Blanches
SOLENZARA, CORSICA
Le Port des Nacres



REZ de CHAUSSEE



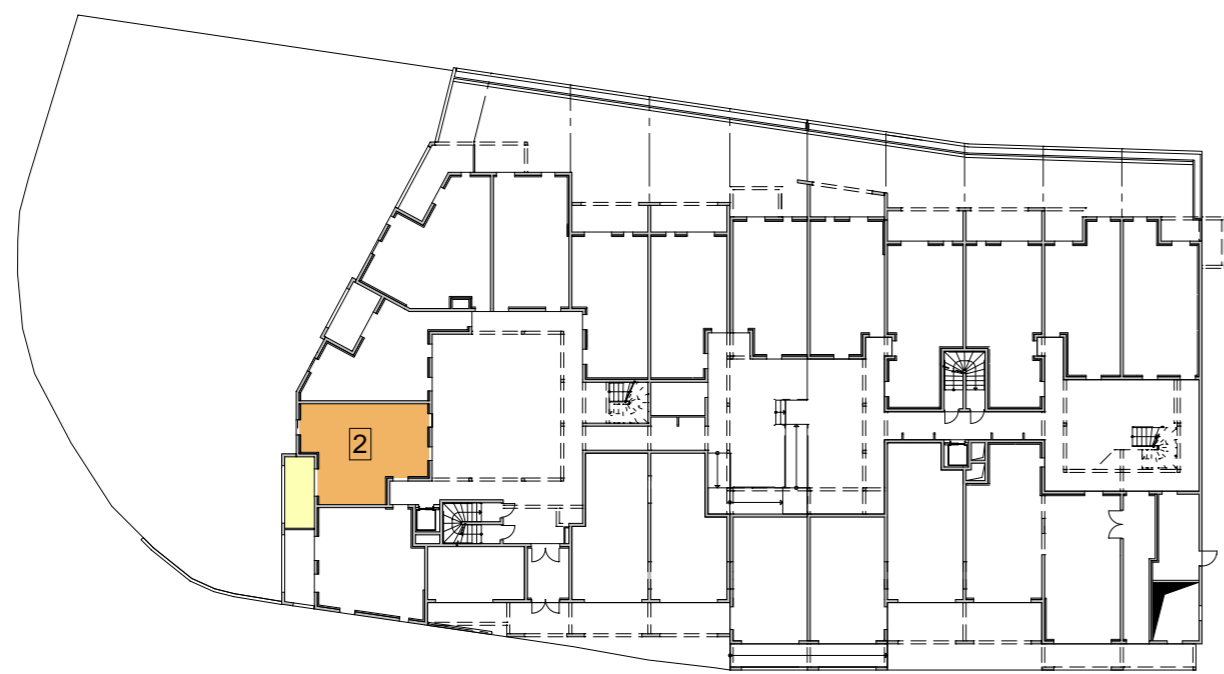
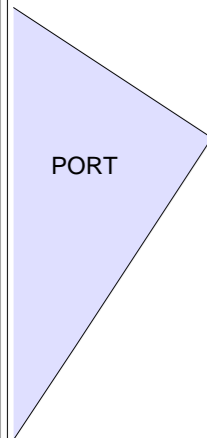
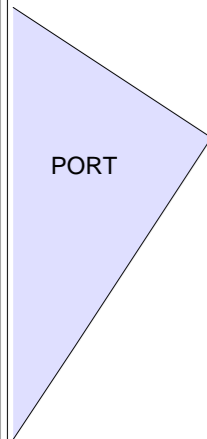
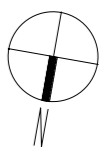
1er SOUS-SOL



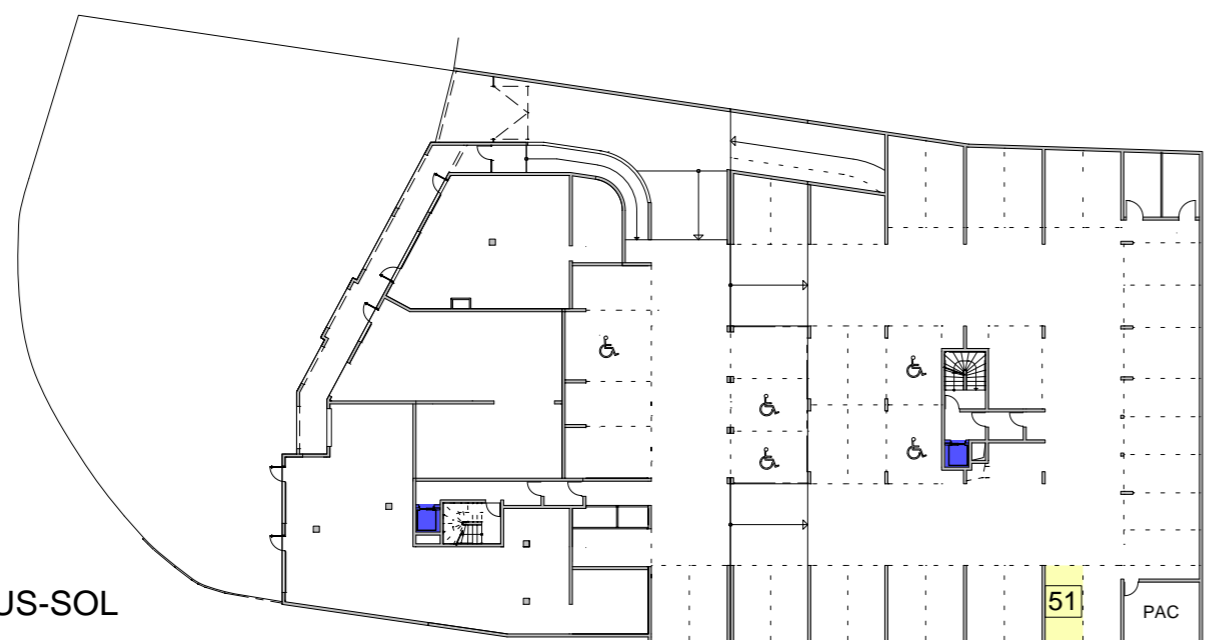
| Appartement N° 01 - Lot : 73 | |
|-----------------------------------|-------------------------|
| | M2 |
| Séjour + Kitchenette | 26.50 |
| Dégagement | 1.15 |
| Chambre | 10.45 |
| Salle d'eau | 4.46 |
| Wc | 1.67 |
| Surface Habitable Totale | 44.23 |
| Terrasse couverte / Balcon | 9.59 |
| Parking en Sous-sol | N° 50 - lot : 46 |



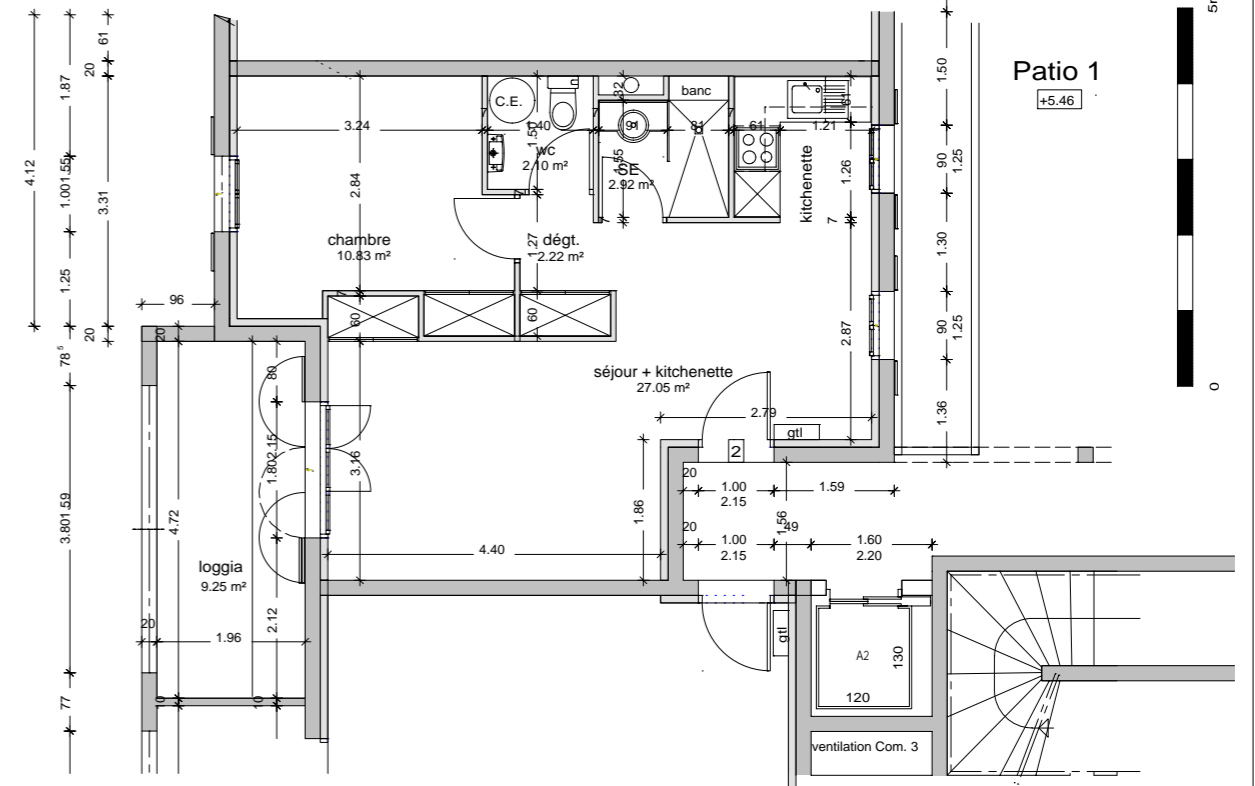
Les Voiles Blanches
SOLENZARA, CORSICA
Le Port des Nacres



REZ de CHAUSSEE



1er SOUS-SOL



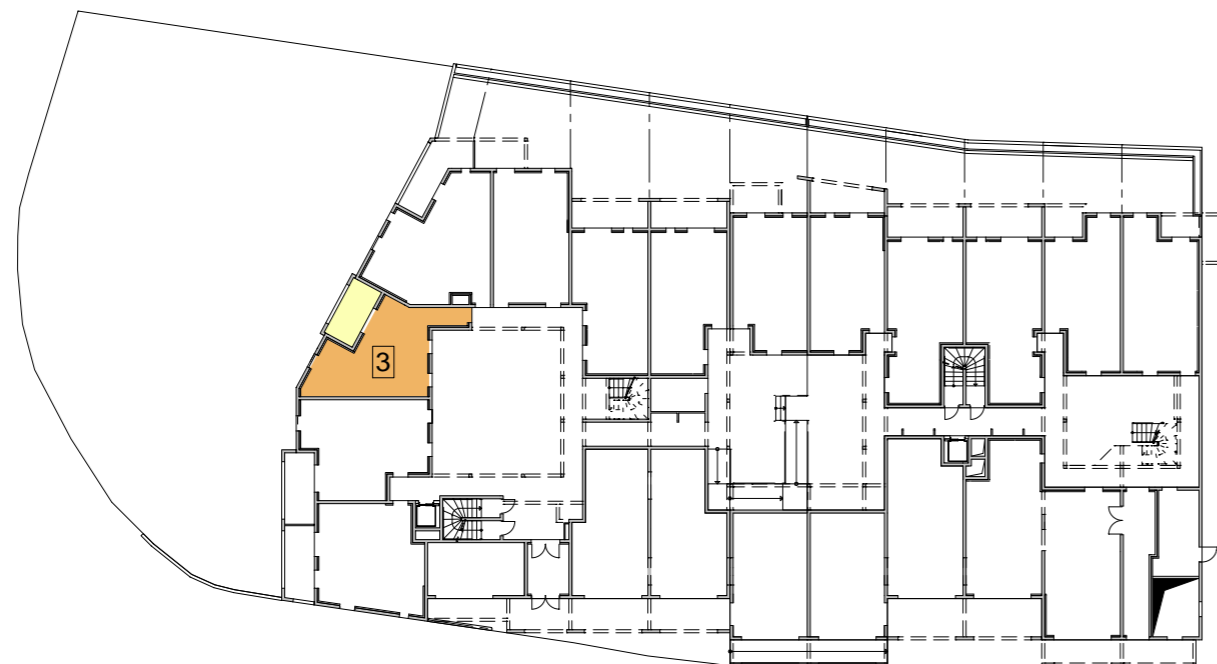
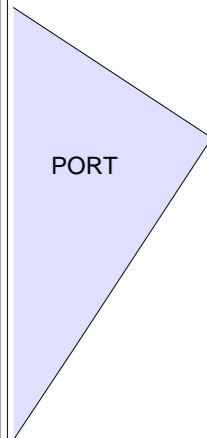
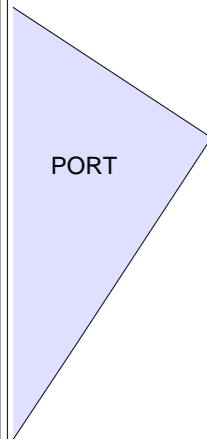
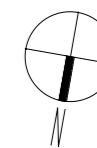
| Appartement N° 02 - Lot : 74 | |
|------------------------------|------------------|
| Rez de Chaussée | M2 |
| Séjour + Kitchenette | 27.05 |
| Dégagement | 2.22 |
| Chambre | 10.83 |
| Salle d'eau | 2.92 |
| Wc | 2.10 |
| Surface Habitable Totale | 45.12 |
| Terrasse couverte / Balcon | 9.25 |
| Parking en Sous-sol | N° 51 - Lot : 47 |



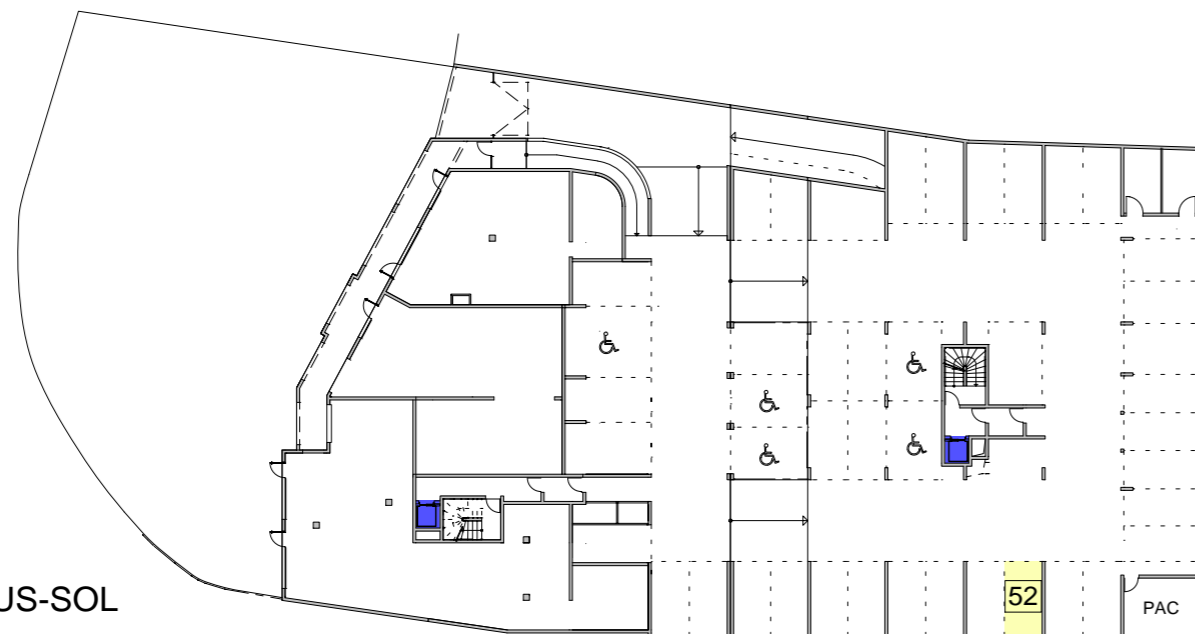
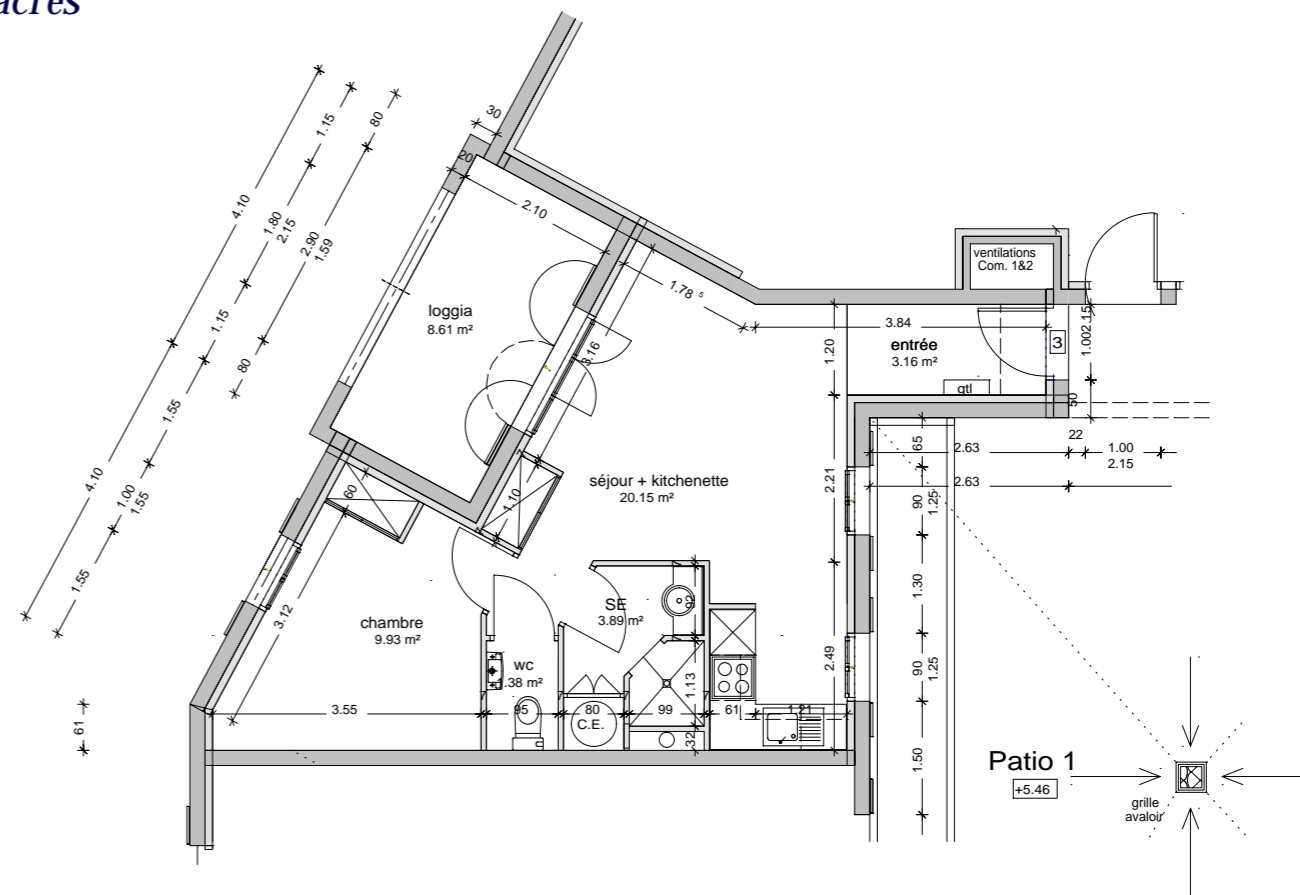
Les Voiles Blanches

SOLENZARA, CORSICA

Le Port des Nacres



REZ de CHAUSSEE



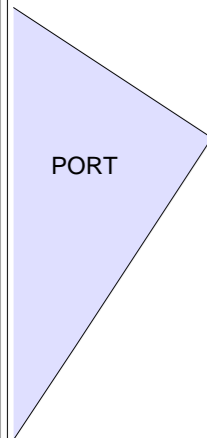
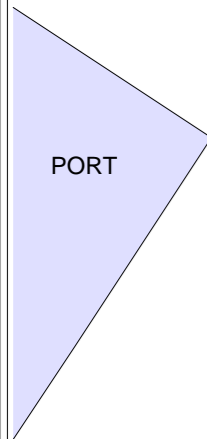
1er SOUS-SOL

Appartement N° 03 - Lot : 75

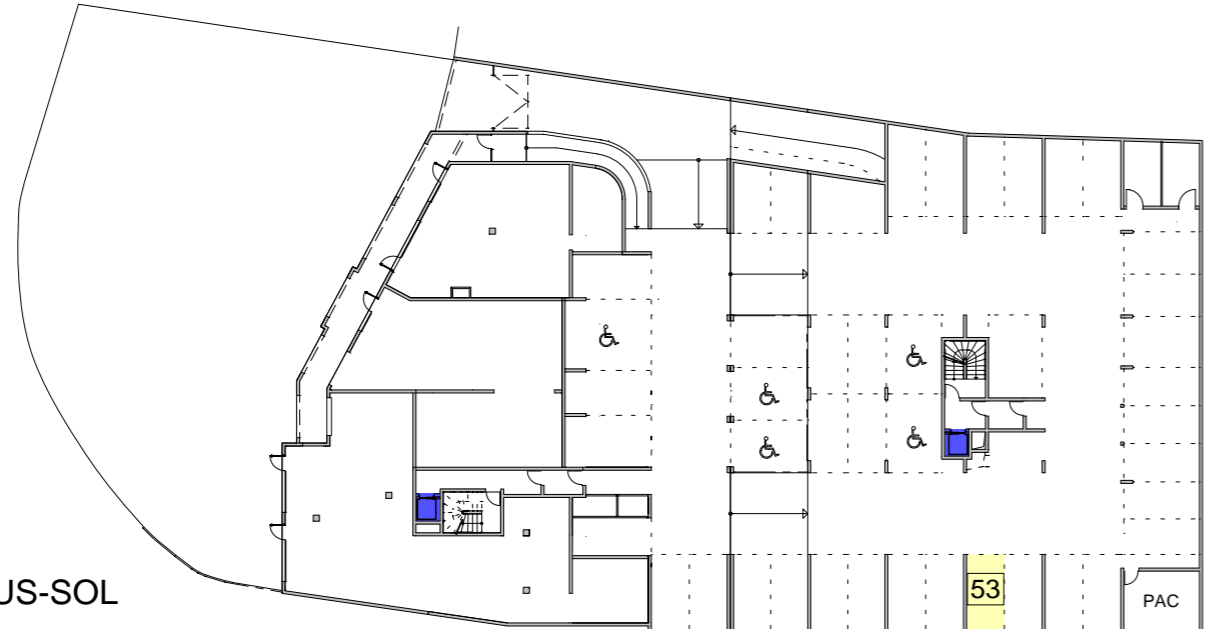
| Rez de Chaussée | M2 |
|---------------------------------|-------------------------|
| Entrée | 3.16 |
| Séjour + Kitchenette | 20.15 |
| Chambre | 9.93 |
| Salle d'eau | 3.89 |
| Wc | 1.38 |
| Surface Habitable Totale | 38.51 |
| Terrasse couverte / Balcon | 8.61 |
| Parking en Sous-sol | N° 52 - Lot : 48 |



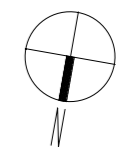
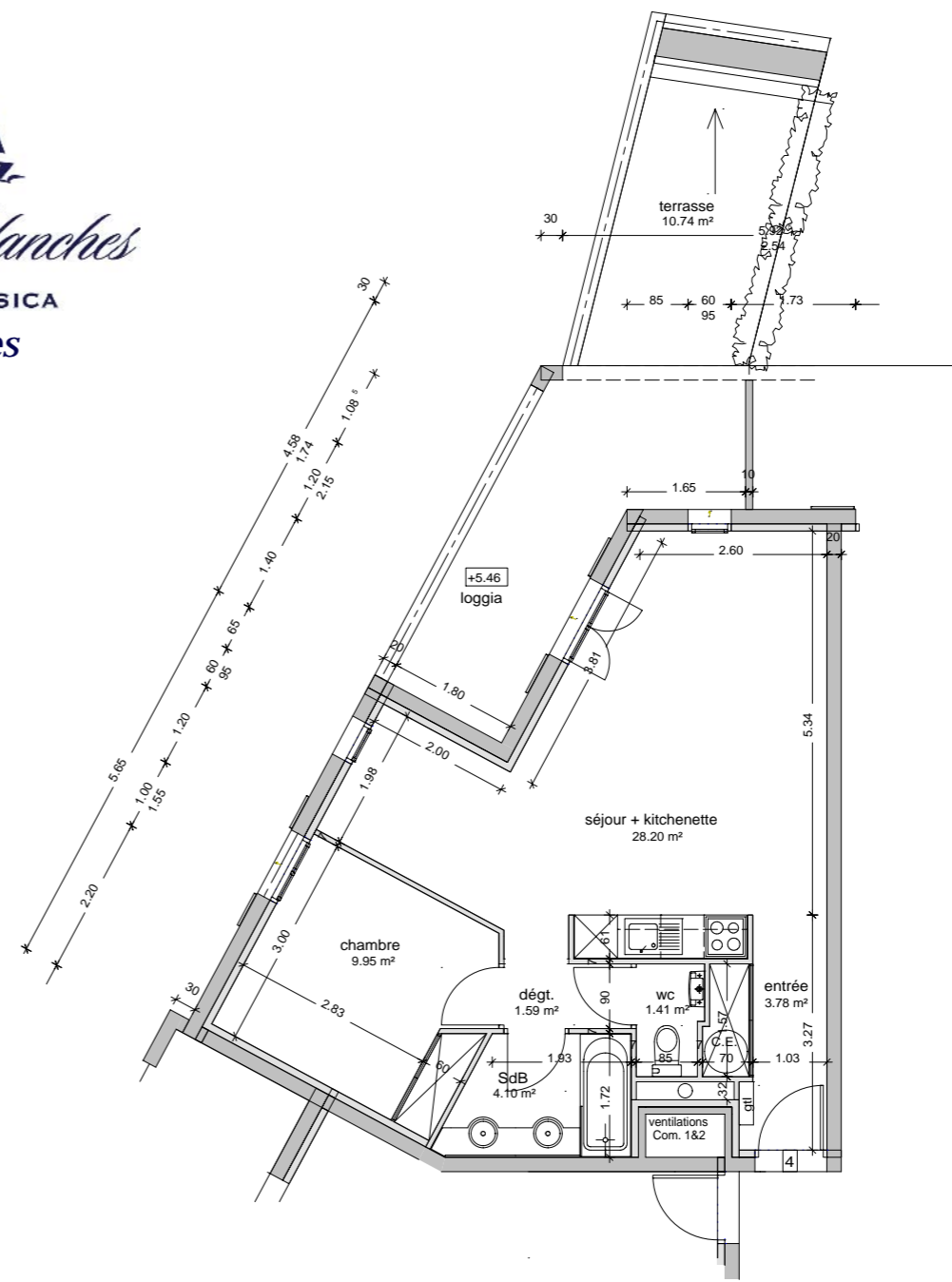
Les Voiles Blanches
SOLENZARA, CORSICA
Le Port des Nacres



REZ de CHAUSSEE



1er SOUS-SOL



| Appartement N° 04 - Lot : 76 | |
|---------------------------------|------------------|
| Rez de Chaussée | M2 |
| Entrée | 3.78 |
| Séjour + Kitchenette | 28.20 |
| Chambre | 9.95 |
| Salle d'eau | 4.10 |
| Dégagement | 1.59 |
| Wc | 1.41 |
| Surface Habitable Totale | 49.03 |
| Terrasse | 9.58 |
| Terrasse couverte / Balcon | 12.06 |
| Parking en Sous-sol | N° 53 - Lot : 49 |